



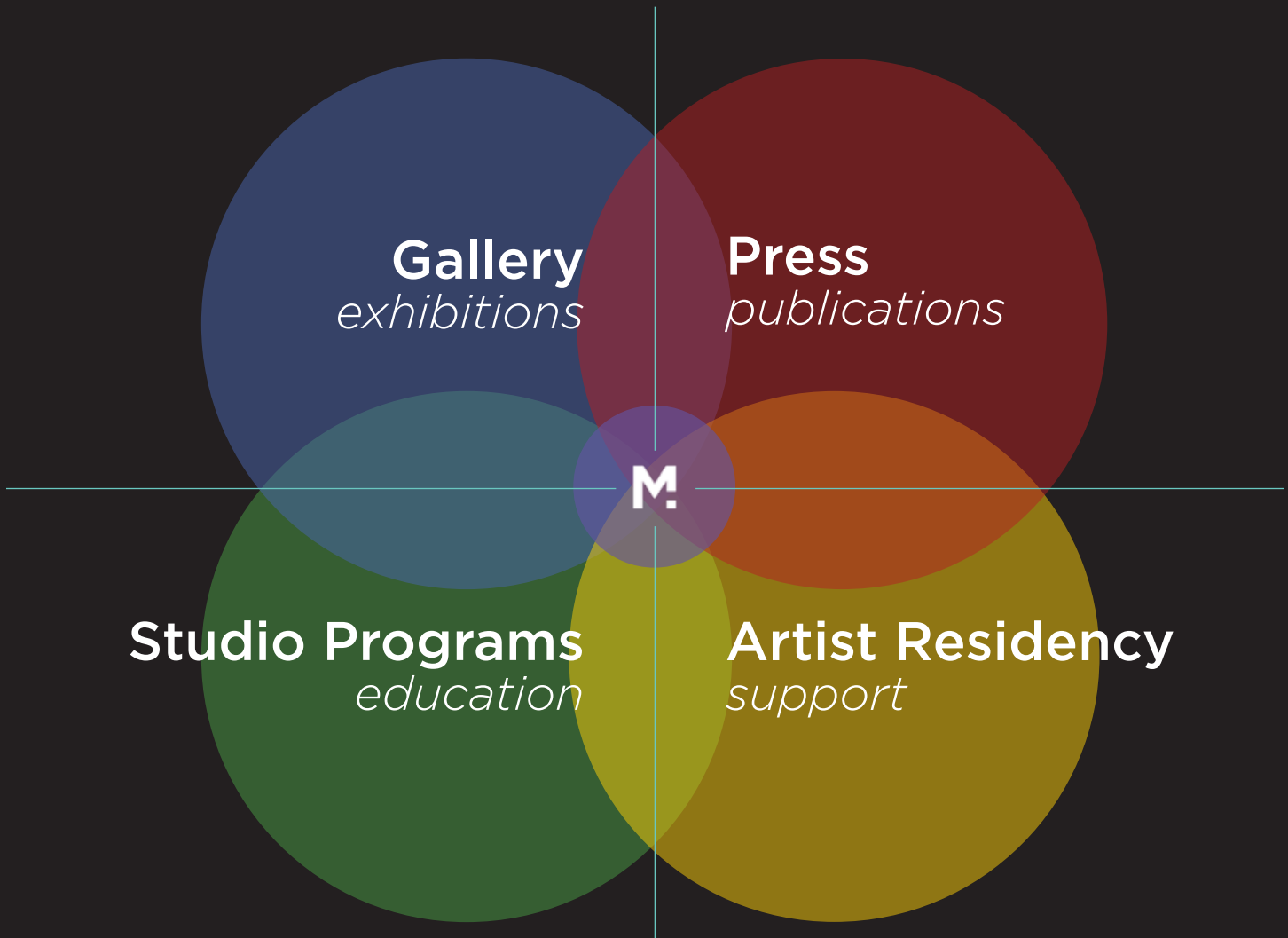
THE MANIFEST CENTER FOR THE VISUAL ARTS

MANIFEST
emerges

Manifest's mission is to stand for the importance of quality in the visual arts by offering meaningful and accessible art-based experiences for the public, promoting deep learning outside academia by supporting visual literacy, critical thinking, and skill development, and by undertaking the ongoing documentation of exceptional art for posterity.

The Fusion of Four Components

Manifest represents a seamless, comprehensive, and socially impactful creative engine by bringing students, working artists, and a diverse public together through dynamically interrelated exhibits, publications, studio programs, and artist residency, centered on the visual arts.



Manifest's 2023-2024 Season

5,804

Studio Participants at our M1 Facility on Central Parkway

2,833

Gallery Visitors to our Exhibits on Woodburn Ave.

5

Resident Artists/Scholars Supported

25

Studio Tours

22

Group Exhibitions

23

Artists Employed

278

Life Drawing Sessions

10

Solo Artist Exhibits

37

Life Models Employed

45

Drawing as Mindfulness Sessions

276

Artists Exhibited

\$28,600

In Artist Awards Given

21

Private Lessons Provided

465

Works Shown

22

Community Events

261

Open Darkroom Sessions

40

**States Represented
(+ Washington D.C.)**

4

School & Educator Visits

40

Courses & Workshops

8

Countries Represented

2

Books Released

6

**Visiting Artist Workshops
(plus 9 public demonstrations)**

19

Colleges and Universities Represented

1

**National Award
(60th Annual Graphic Design USA)**

Where making and public experience converge

The historic museum-school format for visual arts institutions focused on preservation, documentation, and education has faded from the national arts ecosystem. Evidence of the loss of this symbiosis is all around us. Yet there remains a strong demand for such an immersive, holistic arts vision.

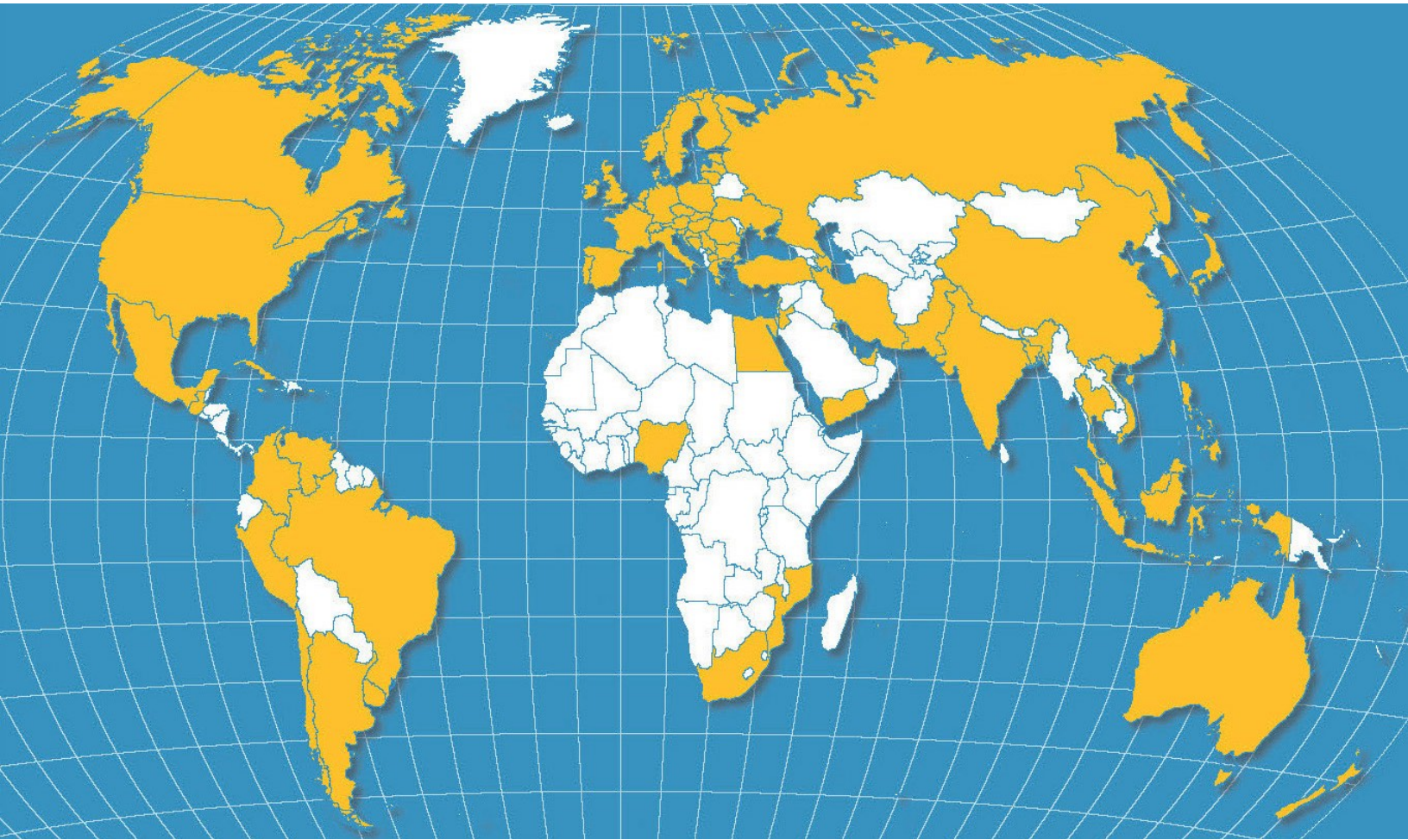
Through the fusing of its nationally-recognized exhibition program with its rigorous expert-led academic studio curriculum, Manifest has evolved into an institution where the two halves re-emerge in seamless balance anchored by a platform supporting sustained creative practice.

**A sanctuary for the practice, study and experience of the visual arts —
a spectrum of engagement.**



A Beacon to Artists, In Dialog with the World

Bringing emerging and established artists together from near and far, deepening their connection to each other across the world, and enhancing the cultural richness, awareness, and relevance of the Cincinnati community.



Countries represented by artists engaging with Manifest projects (over 90 countries and all 50 states).

A Compelling Reach: Exhibits & Publications*

Across twenty-one years of exhibitions and publications Manifest has maintained an international reputation for a consistency of excellence unlike any other arts institution. Our commitment to take a stand for the importance of quality has become a beacon that draws artists to Cincinnati from around the world.

527 *exhibits*

50 *states*

39 *major publications*

11,141 *works*

48 *countries*

74 *exhibit catalogs*

4,422 *artists*

93,000+ *viewers*

7 *Independent Publisher Awards*

253 *academic institutions represented by student work*

** these statistics are as of fall 2025 and the end of season 21*



“I wanted to let you know that I’ve really been impressed by the organization, communication, and compensation on this show. It’s a lot of work, I know. My partner and I spent last weekend in Cincinnati (totally surprised and delighted by this city, which is another whole thing) and we so enjoyed the gallery space and all of the work on display. And like you say, Jason... museum quality. Bravo!”

— Ingrid Ankerson (Ypsilanti, Michigan)
Exhibiting Artist, Summer 2025

A Compelling Benefit: Education & Support

The **Drawing Center** promotes visual art as a transformative practice by providing programs focused on developing visual literacy, critical thinking, hand skills, and aspirational practice. The **Artist Residency** supports artists in making art and engaging the public by providing a free studio space and supportive environment for meaningful career impacting growth.

6,000 *participants/yr*

150+ *mile radius*

8 to 83 *age range*

33 *resident artists from*

Alabama, California, Illinois, Indiana, Iowa, Kentucky, Louisiana, Massachusetts, Michigan, Minnesota, New York, North Carolina, Ohio, Tennessee, Vermont, West Virginia, Wisconsin, Wyoming, (+ Alberta, Canada)



MANIFEST emerges

Manifest is in the midst of a transformational \$8M campaign to catalyze its twenty-one year emergence as a keystone arts institution in the region, and to embrace the full potential of its mission representing an intense but nimble intersection of the best of what the visual arts has to offer society. This vision will be realized in three important ways:

FACILITY



Unify two locations into one permanent comprehensive facility:
The Manifest Center for the Visual Arts.

PROGRAMS



Expand depth and reach of public programming, and capacity of expert staff to maintain holistic and organic growth.

OPPORTUNITY



Support innovation and sustainability, ensuring Manifest retains its nimbleness for future generations.



THE MANIFEST CENTER FOR THE VISUAL ARTS

MANIFEST

Coming Home

A Sanctuary for Creativity and Learning

A community-inspired campus, where a comprehensive visual arts experience comes to life through study, practice, experience, camaraderie, mentorship, and contemplation.

In 2021 Manifest finally purchased its permanent home (M1):

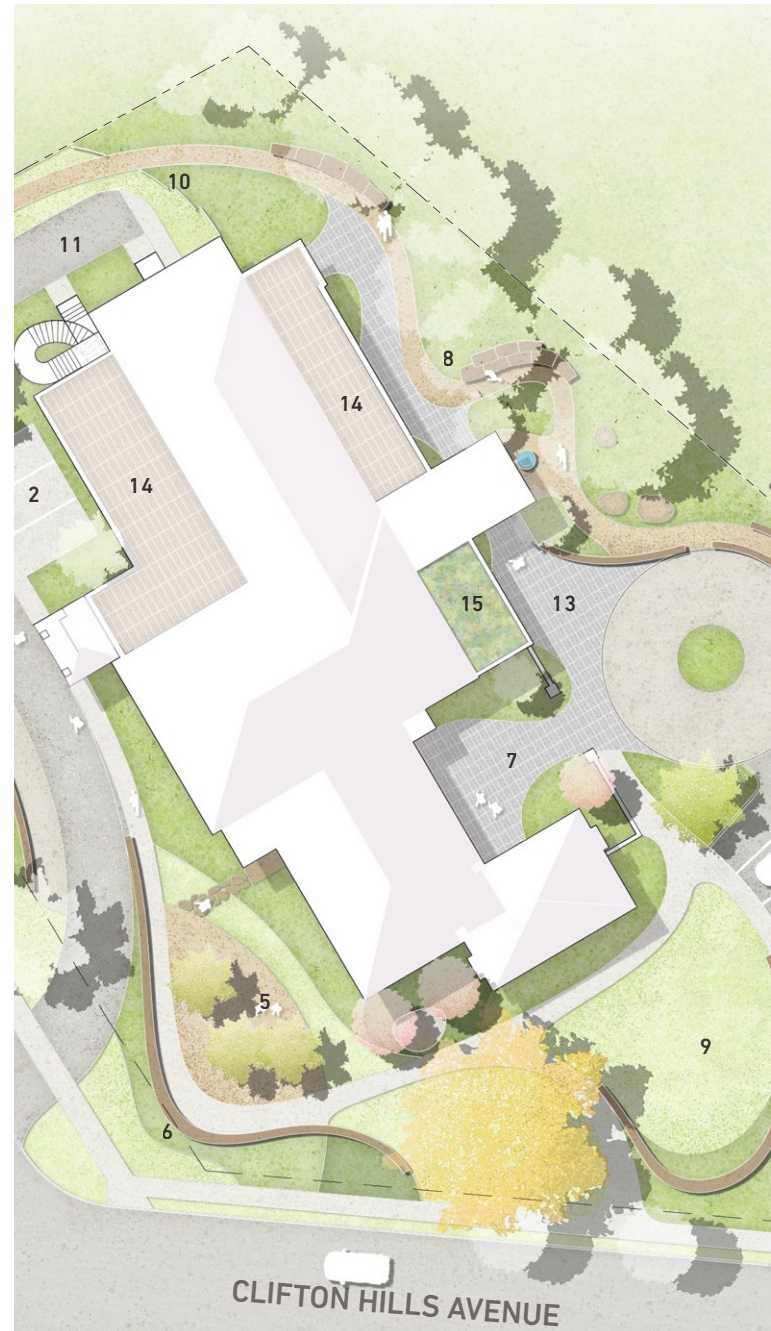
- Preserving an iconic French Normandy style 1932 historic 15,000 square foot property on Central Parkway in Clifton.
- Future home of an emerging keystone institution—**the Manifest Center for the Visual Arts.**
- To achieve a resounding synergy by bringing national exhibition and regional educational studio programs together under one roof.



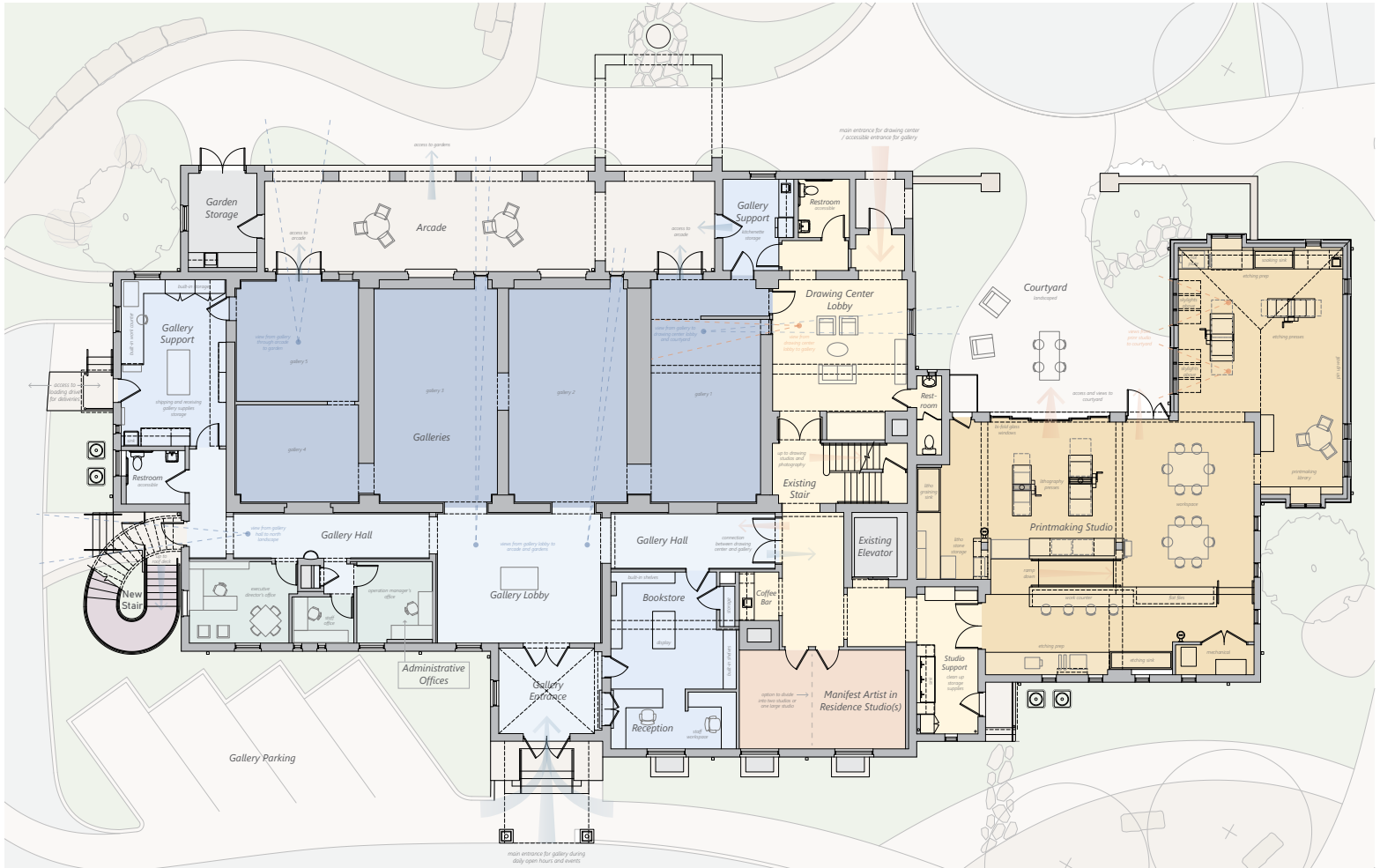
Under One Roof

Key Features

- 15,000 square feet of space.
- Multipurpose classrooms/artist residency studios.
- 1-acre site including designed gardens for programs, public events, and outdoor sculpture.
- Two rooftop studio terraces for classes, study space, and public receptions.
- New 2,000 sq. ft printmaking studio, adding a key catalyzing program element.
- Expanded darkroom.
- Bookstore, the Manifest Archives, and Art Economy Lab supporting local artists, research, and public collection.
- Expansive Art Reference Library and reading spaces.

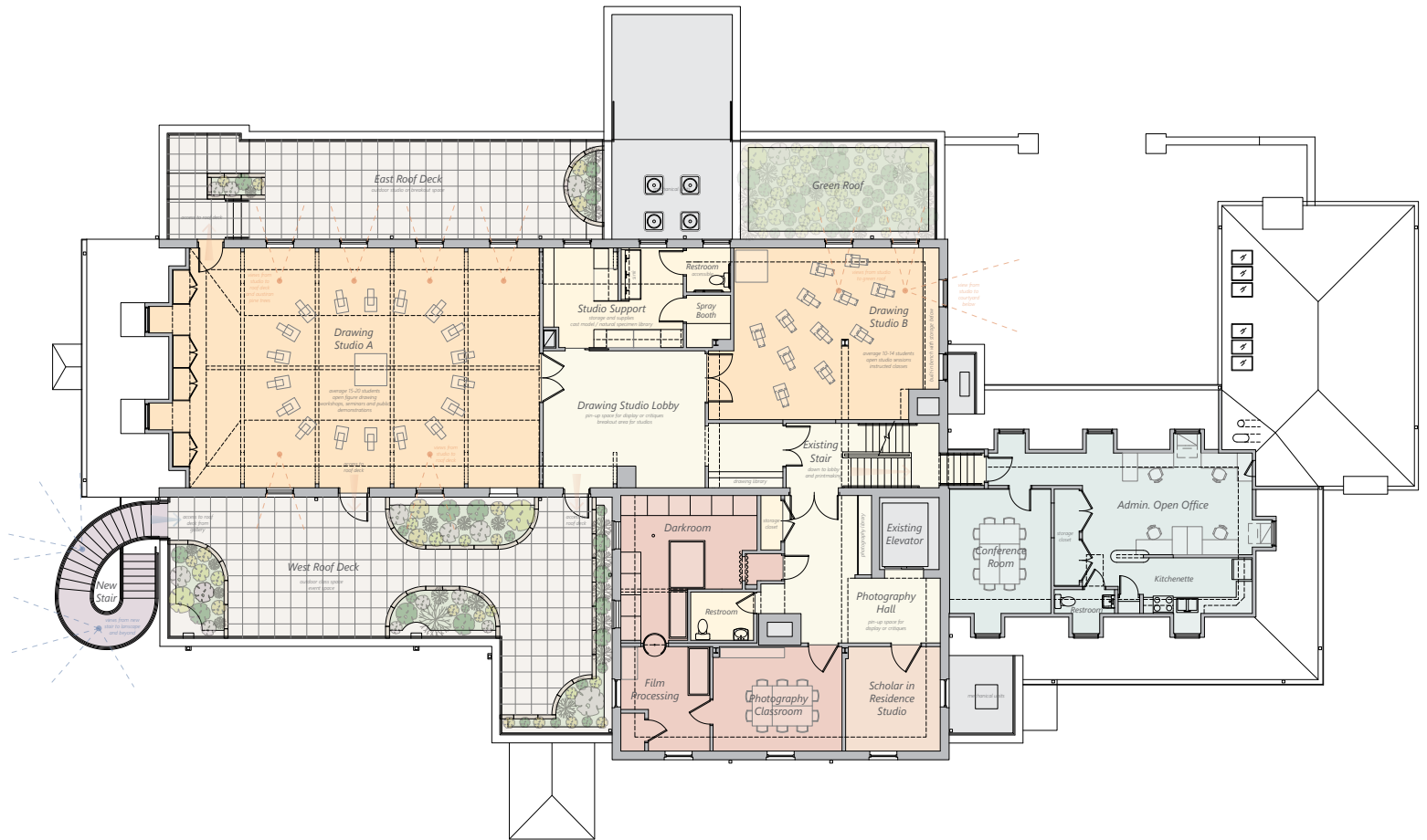


M1 - Floor 1



- Experiential zones (Galleries, Bookstore/Art Economy Lab/Archives)
- Study & Practice zones (Studios, Library)

M1 - Floor 2



Crossover zones (Roof Decks are both public and studio oriented)



Study & Practice zones (Studios, Darkroom, Photo Classroom, Library)

PHASE ONE

With the campaign now reaching 60% of its goal, Manifest was able to begin the first phase of construction in spring 2025. This phase is focusing on securing the building by making it watertight, expanding parking, addressing primary (but not all) accessibility needs, and repurposing space to establish the new Manifest Printmaking Wing. These improvements allow for a significant early expansion of public programming.

PHASE TWO

Phase Two is *critical*. It will realize the Campaign's core objective: uniting all of Manifest's programs under one roof in a permanent home. This move is not just a milestone—it's a *necessity* for long-term sustainability, creative expansion, and deeper community engagement. To avoid costly delays and protect vital programs, construction on this phase must begin by late 2025. Reaching the \$8 million goal soon will allow progress to maintain momentum—and ensure that Manifest's transformative vision becomes reality.

WHAT IS NEXT

- Replace the failing boiler system with energy-efficient heating and cooling, establishing full building air conditioning.
- Restore key historic windows and improve overall energy efficiency.
- Build out the Manifest galleries, establishing the permanent home of *the Neighborhood Gallery for the World*.
- Expand drawing & painting studios, allowing for a doubling of programs.
- Finalize compliance with city code, including accessible restrooms, fire and security systems, improved parking, and so much more!

A WORK IN PROGRESS

Restoring a Community Landmark of Architecture



CREATING THE FUTURE

A Sanctuary for Practice, Learning, and Experience



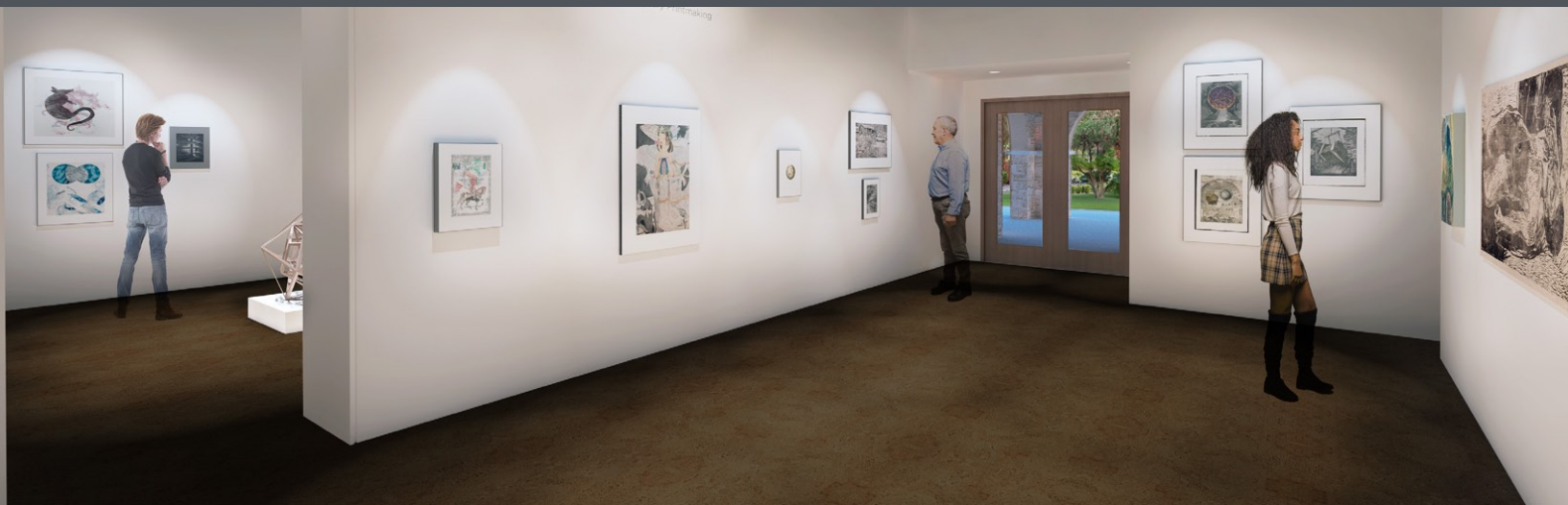
Printmaking studio,
slate repair, and
parking lot retaining
wall in progress.

*Craftsmen in
the service of
craftsmanship.*



A NATIONAL BEACON TO ARTISTS

Securing the Neighborhood Gallery for the World





THE MANIFEST CENTER FOR THE VISUAL ARTS

PROGRAMS

New & Expanded Programs

Manifest is nimble, able to explore a healthy variety of themes and approaches to its program offerings.

With the new facility comes the opportunity for greatly expanded engagement, programming and community impact:

- With more space for studios, 60% more exhibit space, ample on-site parking, a new printmaking studio, and an expanded darkroom, Manifest will double its number of participants within the first two years after project completion.
- A new printmaking program will add a catalyzing element in dynamic and complementary relation with drawing, painting, and photography, further empowering artist development and public engagement.
- Larger studios and creative integration with other programs, along with competitive compensation for teaching artists, and financial support for artists in residence means Manifest will attract an even wider pool of talent from across the nation.





THE MANIFEST CENTER FOR THE VISUAL ARTS

OPPORTUNITY

Opportunity & Sustainability

Supporting the organization's ability to explore, create, and act on important partnerships with a sturdy financial foundation.

As a nonprofit arts organization, Manifest stands by its formation **as a work of art** by artists, for artists, for the public. As such, a foundation with a certain amount of flexibility with creative tools and funding available at the ready, including the possibility of an endowment, is critical to maintaining the lively development of future programs as opportunities arise.

For example...

- Spontaneous educational partnerships with local and national colleges and high schools, and cultural institutions.
- Producing outdoor site-specific installations.
- Producing high level exhibits of works by historically relevant artists.
- Creating community-impacting programs that are timely and timeless.



How Can You Help?

We're grateful for the opportunity to share this overview of the plans for the emergence of **the Manifest Center for the Visual Arts**—a national sanctuary for practice, learning, and experience.

With the help of those who share Manifest's values and care about its evolution, this momentous project will cement a keystone for the arts in the region, establish a new cultural anchor and creative campus on Central Parkway, and extend Manifest's twenty-one year legacy championing visual literacy, critical thinking, and skill development for all.



LEARN MORE!

The Manifest Emerges Documentaries

THE FUTURE OF MANIFEST

Manifest has spent over two decades championing excellence, rigor, and openness in the visual arts. Now, we're building a permanent home that reflects and expands this mission: the Manifest Center for the Visual Arts. You'll hear from the voices at the heart of Manifest—artists, educators, and supporters—and see inside the Center already taking shape in Cincinnati.

vimeo.com/1095162668

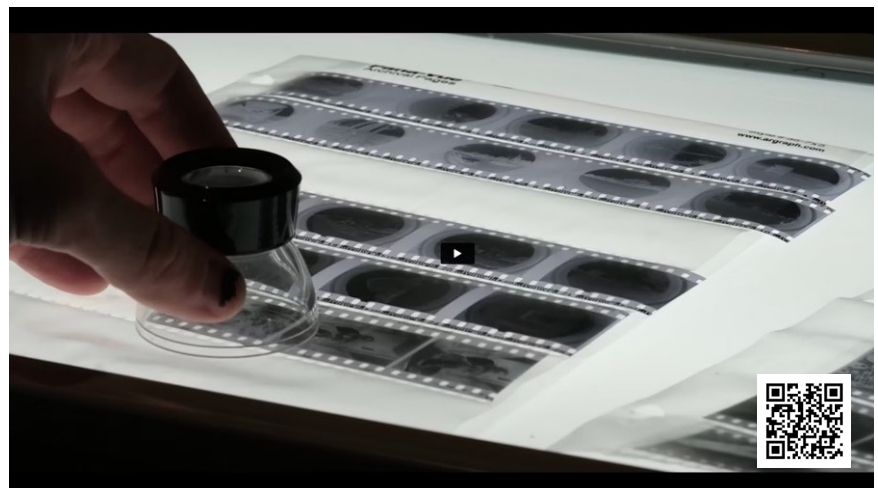


[scan to watch](#)

ABOUT MANIFEST

This short documentary introduces the heart and vision of Manifest. Through the voices of artists, educators, and community members, the film explores Manifest's impact as a space where the visual arts are practiced, taught, studied, and shared.

vimeo.com/1095154146



[scan to watch](#)

Campaign Cabinet

HONORARY CHAIR

Phillip Long

CO-CHAIRS

Mary Heider

Perin Mahler



Manifest Project Team

CABINET

Adam Bloomfield

Cole Carothers

Chris Coy

Polly Hart

Debbie Heuer

Melissa Lusk

Brigid O’Kane

Daniel Pfahl

Carole Winters

Jason Franz

Co-Founder, Executive Director

Erin Corley

Operations Manager

Adam Mysock

Education & Studio Program Manager



jason@manifestvisualarts.org

www.manifestvisualarts.org

513.861.3638